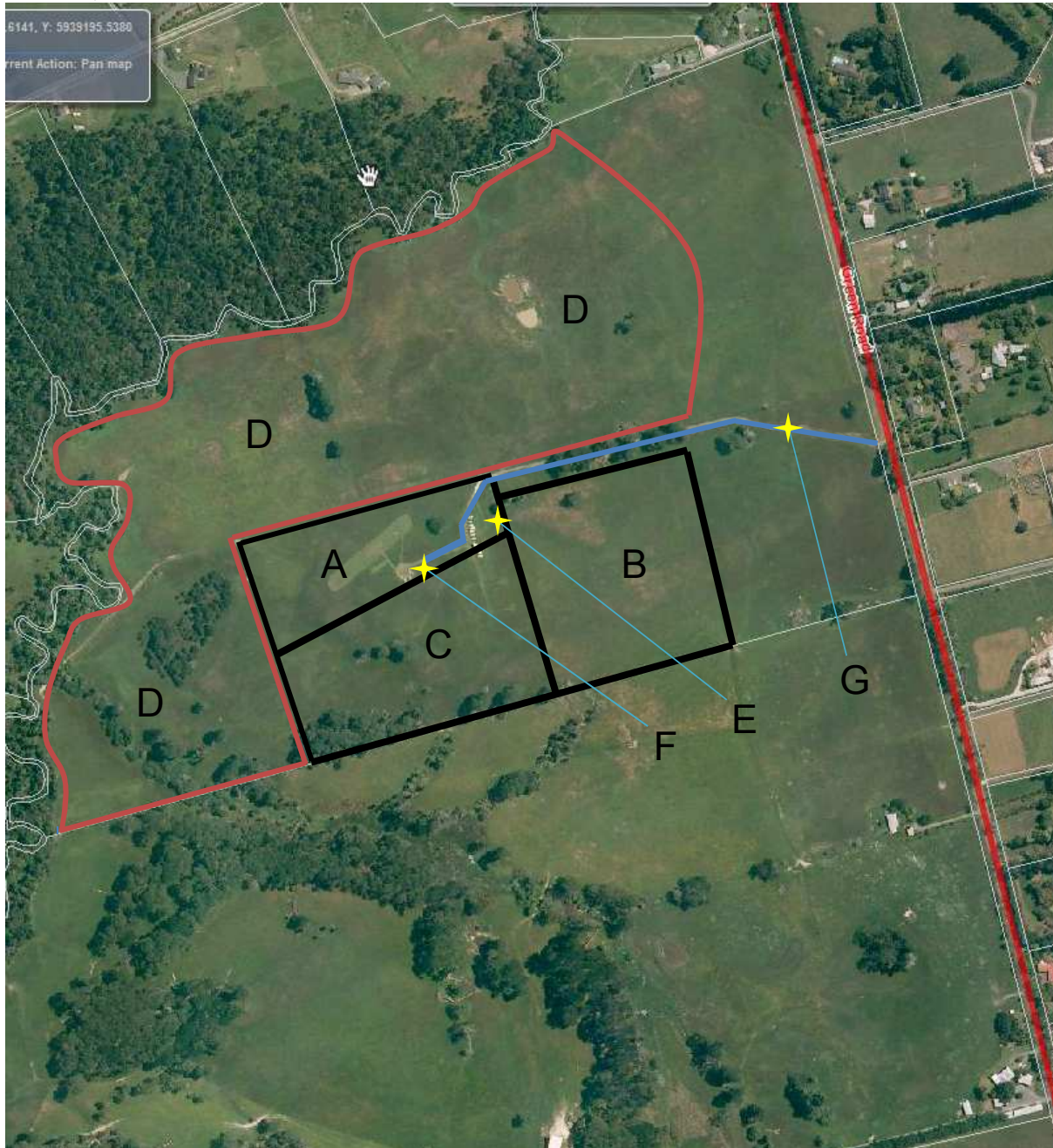


GIS view, Green Road



- A) Fixed Wing Air Craft Air Field (Current)
- B) Helicopter Landing Pad and Flight Zone. (Current)
- C) RotorCross (Drone) Landing Pad and Flight Zone (Current)
- D) Fixed Wing Flight Zone. (Current)
- E) Container Storage 20ft
- F) Small timber shed (on skids)
- G) Access Road (Currently Maintained by NSMAC)

Note :- Under NZMAA General Rules and Guidelines it is not permitted to fly above people, cars or buildings so a clear flight zone must be outlined and maintained.